

LEGAL NOTICE NO. 42

REPUBLIC OF TRINIDAD AND TOBAGO

THE FORESTS ACT, CHAP. 66:01

ORDER

MADE BY THE MINISTER UNDER SECTION 2 OF THE FORESTS ACT

THE FORESTS (PROHIBITED AREAS) ORDER, 1999

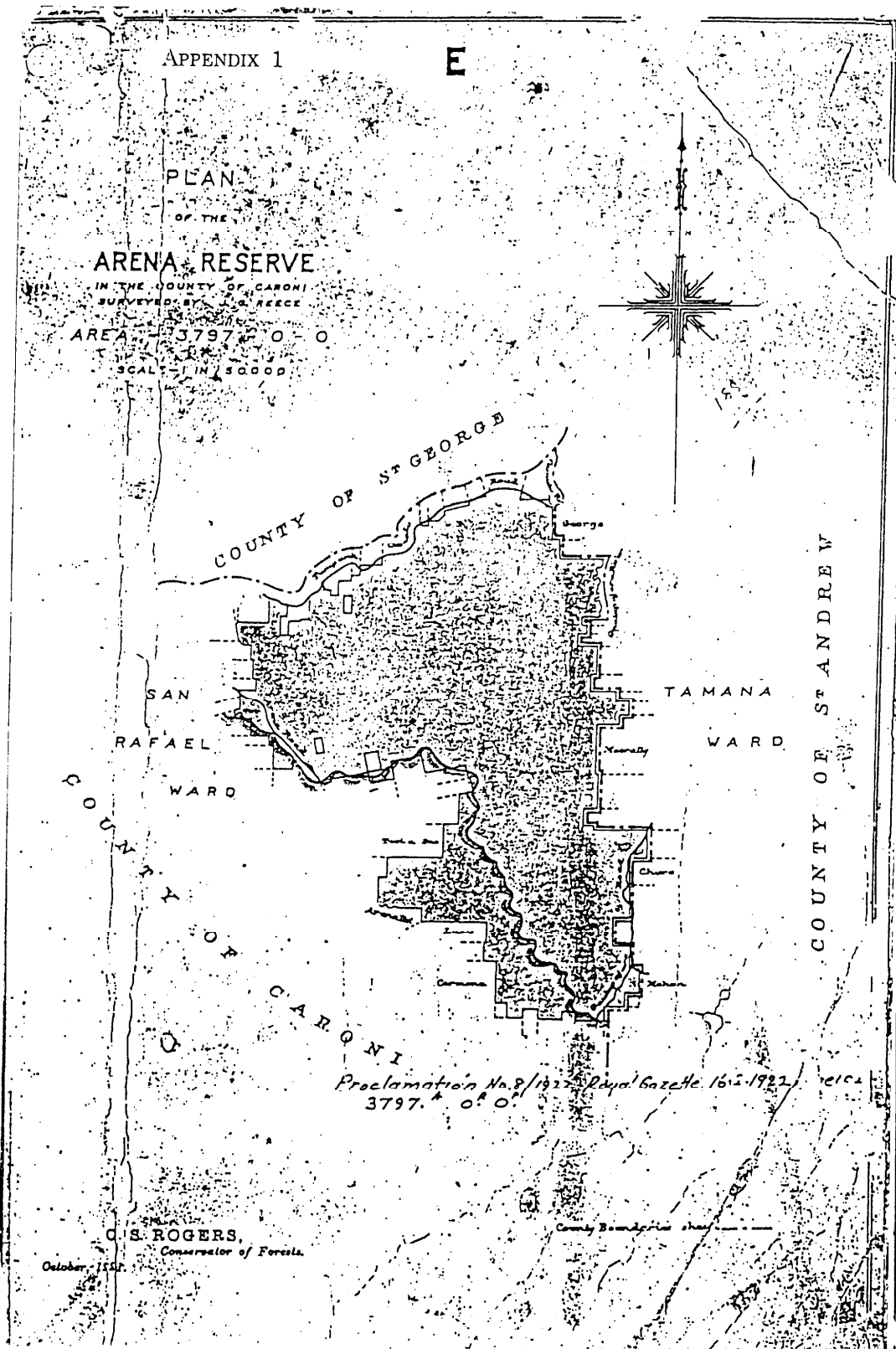
1. This Order may be cited as the Forests (Prohibited Areas) Order, Citation 1999.
2. The Forests Reserves referred to in the Schedule and delineated in the respective plans at Appendices 1–15 are hereby declared prohibited areas until 30th June, 1999.

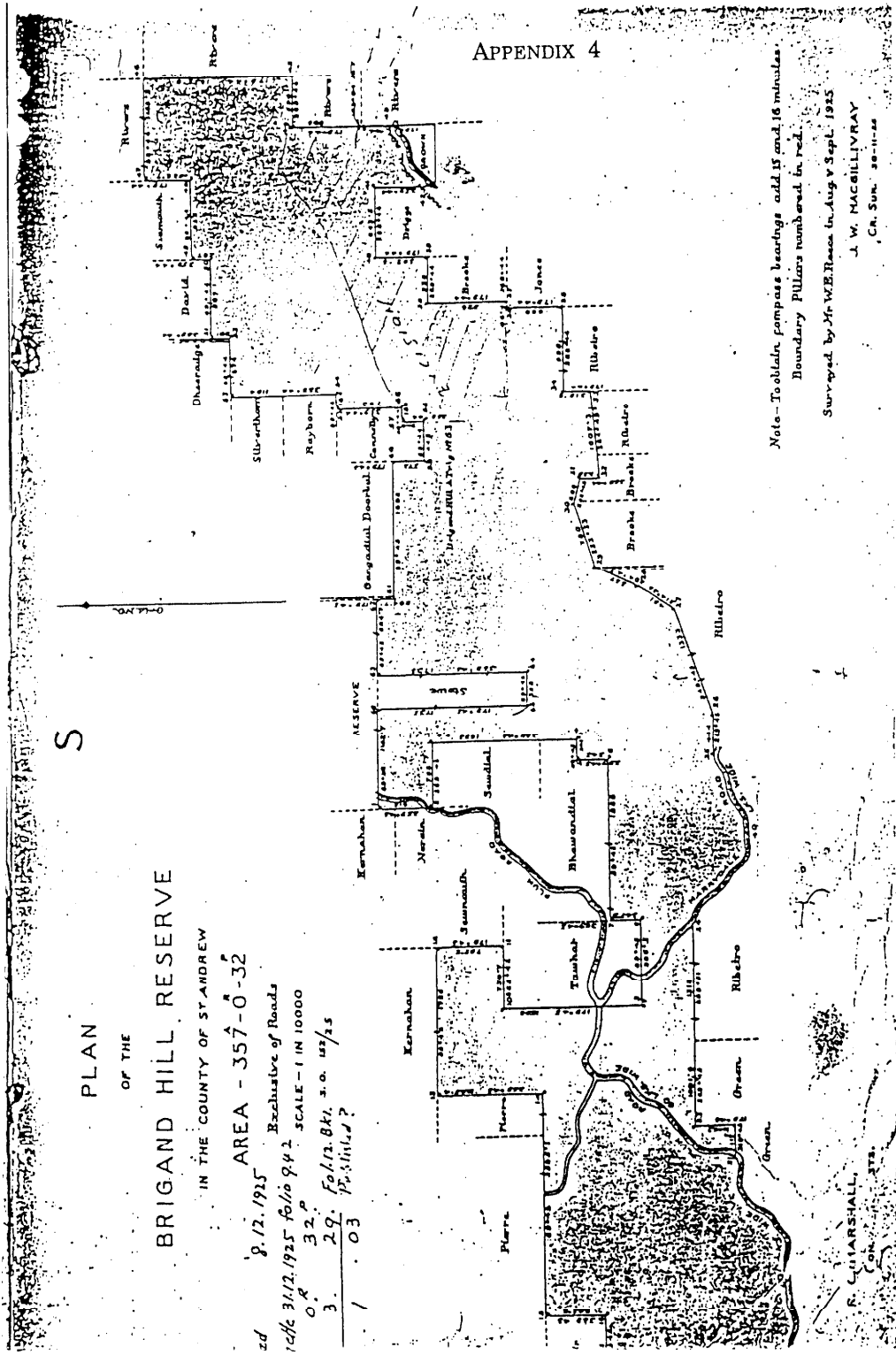
SCHEDULE

Arena Reserve	(Appendix 1)
Arima Reserve	(Appendix 2)
Blanchisseuse Reserve	(Appendix 3)
Brigand Hill Reserve	(Appendix 4)
Ecclesville Windbelt Reserve	(Appendix 5)
Las Cuevas Reserve	(Appendix 6)
Nariva Windbelt Reserve	(Appendix 7)
Northern Range Reserve "A"	(Appendix 8)
Northern Range Reserve "B"	(Appendix 9)
Northern Range Reserve "C"	(Appendix 10)
Paria Reserve	(Appendix 11)
Tacarigua Reserve	(Appendix 12)
Todd's Road North Forest Reserve	(Appendix 13)
Todd's Road South Forest Reserve	(Appendix 14)
Yarra Reserve	(Appendix 15)

Made this 10th day of February, 1999.

R. MOHAMMED
*Minister of Agriculture, Land and
Marine Resources*





PLAN
OF THE
BRIGAND HILL RESERVE
IN THE COUNTY OF ST. ANDREW

AREA - 357-0-32
Exclusive of Roads
8.12.1925
31.12.1925
0. R. 32. P.
3. 29. Feb. 12. 841. s. o. 12/25
1. 03

APPENDIX 4

Note - To obtain compass bearings add 15 and 16 minutes.
Boundary Pillars numbered in red.
Surveyed by Mr. W.E. Rance in Aug & Sept. 1925.
J. W. MACGILLIVRAY
C.R. Surv. 20-11-25

APPENDIX 5

10

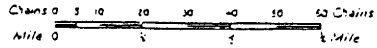
Z

PLAN OF THE
ECCLESVILLE WINDBELT
RESERVE
CONTAINING

1277 A R P
 O O O
IN THE COUNTY OF NARIVA

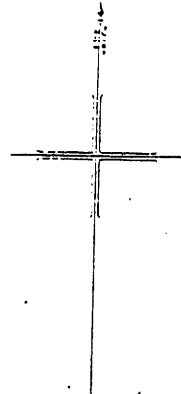
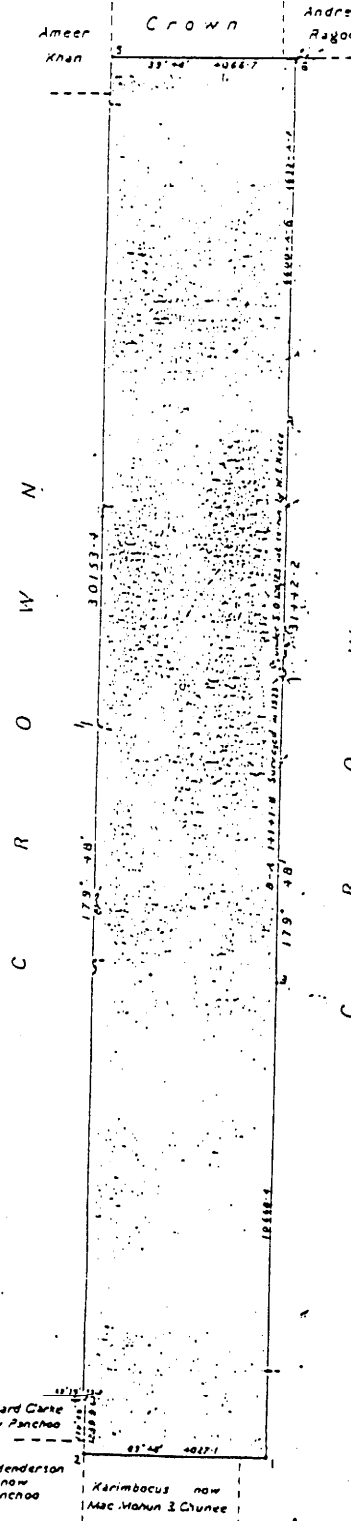
Surveyed by W. E. Rees in 1934
(S.O. 48/24)

Scale 1:25,000



Boundary Pillars numbered in red

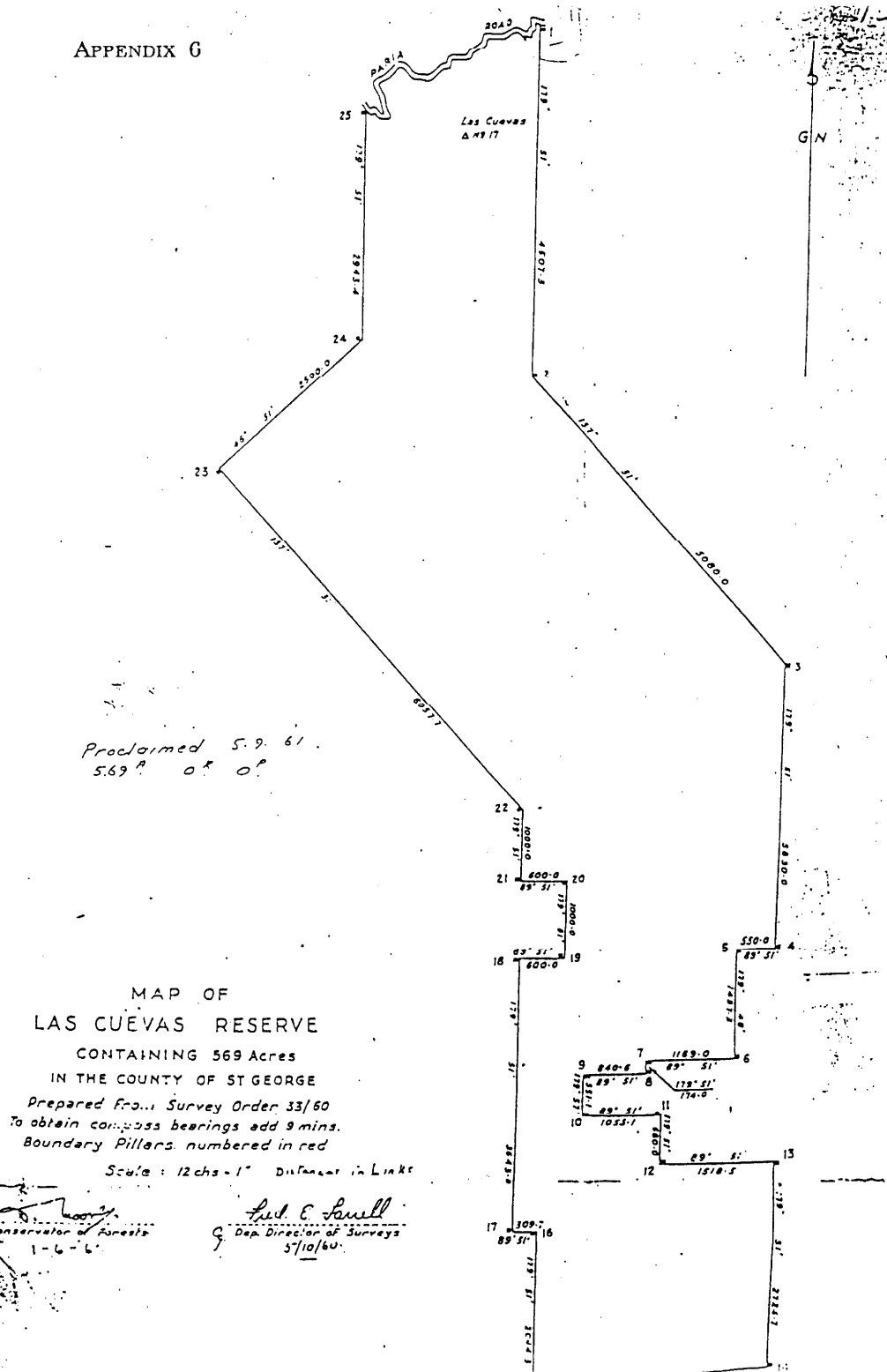
To obtain Compass Bearings add 12 Minutes



Proclamation No. 57 of 1934
Roy. Gaz. 11. 10. 1934
1277 A O R O P

R. L. Brooks J. W. Macgillivray
Ag. Conservator of Forests Surveyor-General
31. 8. 34 30. 8. 34

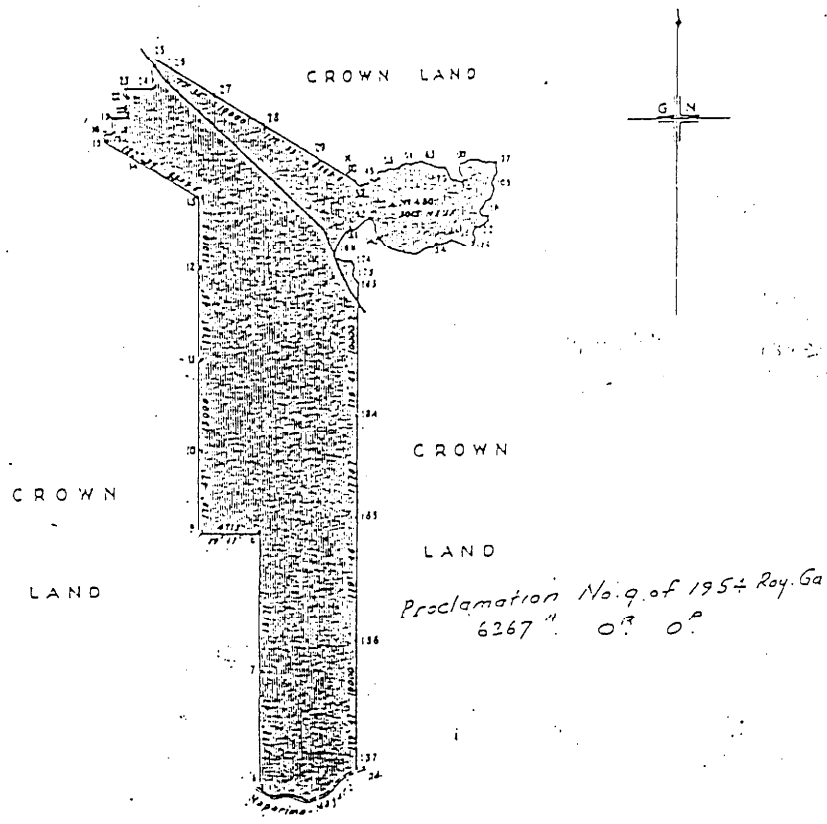
APPENDIX G



APPENDIX 7

II

24



Pillars	Bearings	Dist.
13-16	173° 46'	230.7
16-17	90° 08'	221.7
17-18	85° 46'	403.0
18-19	173° 46'	230.7
20-21	118° 46'	1482.6
21-22	91° 11'	44.1
22-23	173° 46'	230.0
23-24	91° 46'	231.3
24-25	173° 46'	230.3

PLAN OF THE
 NARIVA WINDBELT RESERVE
 CONTAINING
 6267 Acres
 IN THE COUNTY OF NARIVA

Surveyed by Messrs. M. Reece and V. Forpin in 1935.
 Survey Orders 19/23 & 47/35

Scale 1:75000

To obtain compass bearings add 12 to 15 mins.
 Boundary marks shown in red.

[Signature]
 Commissioner of Forests
 10.4.57

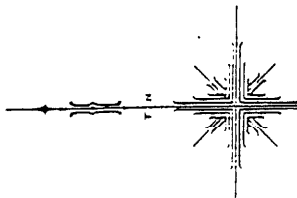
[Signature]
 Director of Surveys
 4/4/57

25

25A

APPENDIX 9

PLAN
OF PORTION "B"
NORTHERN RANGE RESERVE
IN THE COUNTY OF SYDNEY
SURVEYED BY A. F. SALAZAR
AREA - 2313 - 2 - 27
SCALE - 1:30000

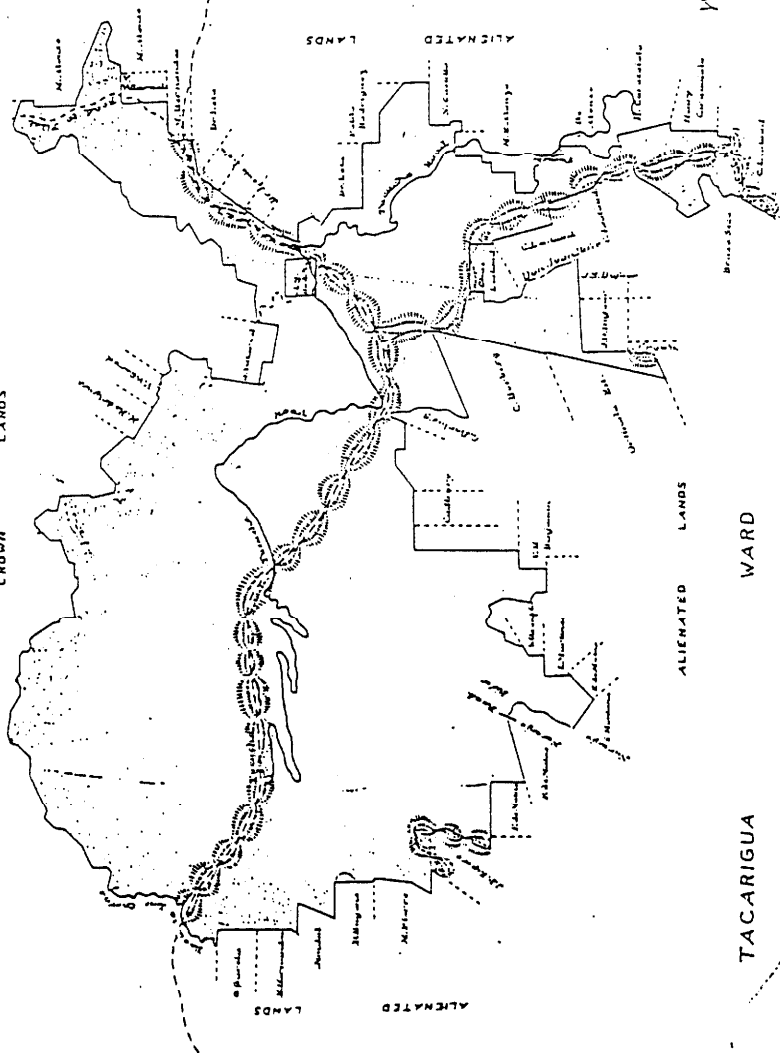


B

WARD

CROWN LANDS

BLANCHISSEUSE



ALIENATED LANDS

WARD

TACARIGUA

Wildlife Sanctuary

See also 25B

O.S. to ...

July, 1991.

25B

APPENDIX 10

C

PLAN

OF PORTION "C"

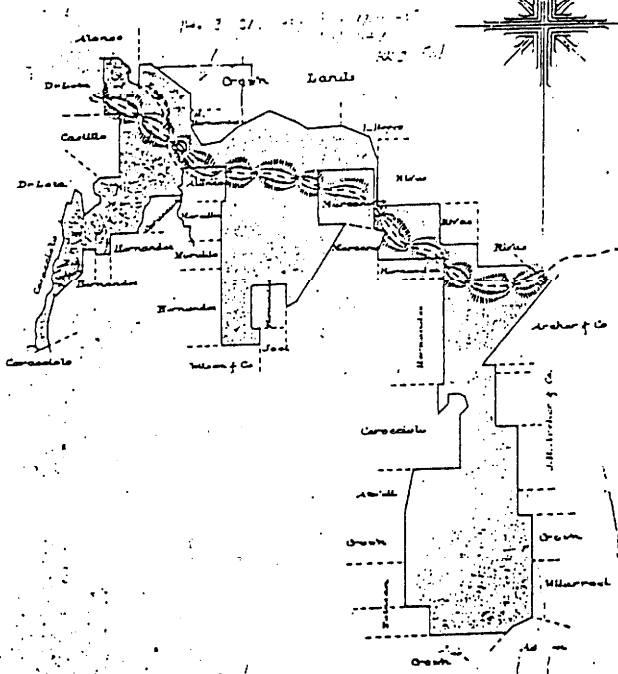
NORTHERN RANGE RESERVE

IN THE COUNTY OF ST. GEORGE
SURVEYED BY A. F. SALAZAR

AREA - 239 - 2 - 13

SCALE - 1:8750

BLANCHISSEUSE WARD



Proclamation No. 8 of 1922, Roy. Gaz. 16. 2. 1922.
 A folio 25 804. 0. 0
 B " 25A 2313. 2. 27.
 C " 25B 239. 2. 13
 3357. 1. 0

TAGAR GUA WARD

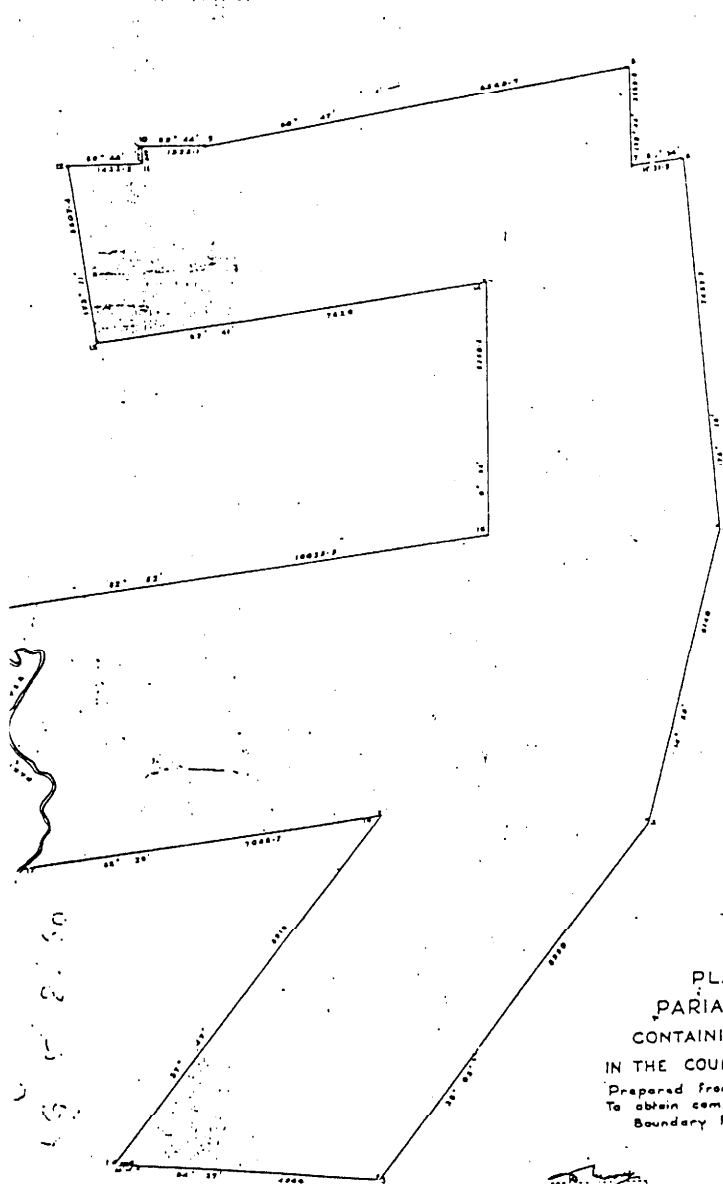
Ward boundaries shown by dashed lines

S. ROGERS,
Conservator Forests.

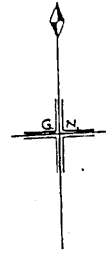
Oct

APPENDIX 11

27




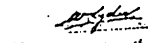
Roy. Gaz. 5. 8. 1969 14/60
 1782, 0. 0.



VV

PLAN OF
 PARIA RESERVE
 CONTAINING 1782 ACRES
 IN THE COUNTY OF ST GEORGE
 Prepared from Survey Order No 203/59
 To obtain compass bearings add 18.214mm
 Boundary Pillars numbered in red


 Conservator of Forests


 Deputy Director of Surveys

APPENDIX 12

32

RR

PLAN OF THE
ACARIGUA RESERVE
CONTAINING
1749 ACRES

THE COUNTY OF ST GEORGE

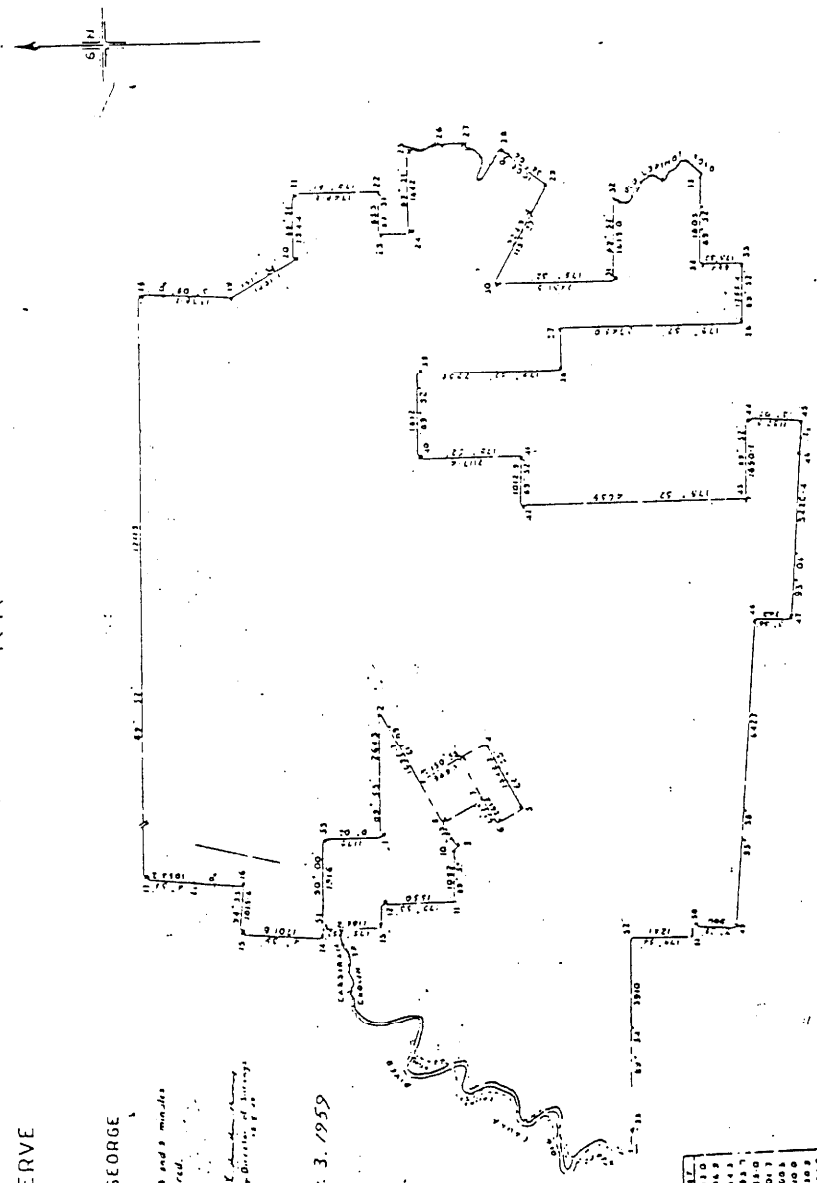
referred from Survey Order
completing bearings and 1/4, 1/8 and 1/16
boundary pillars shown in red.

Scale: 1:10000

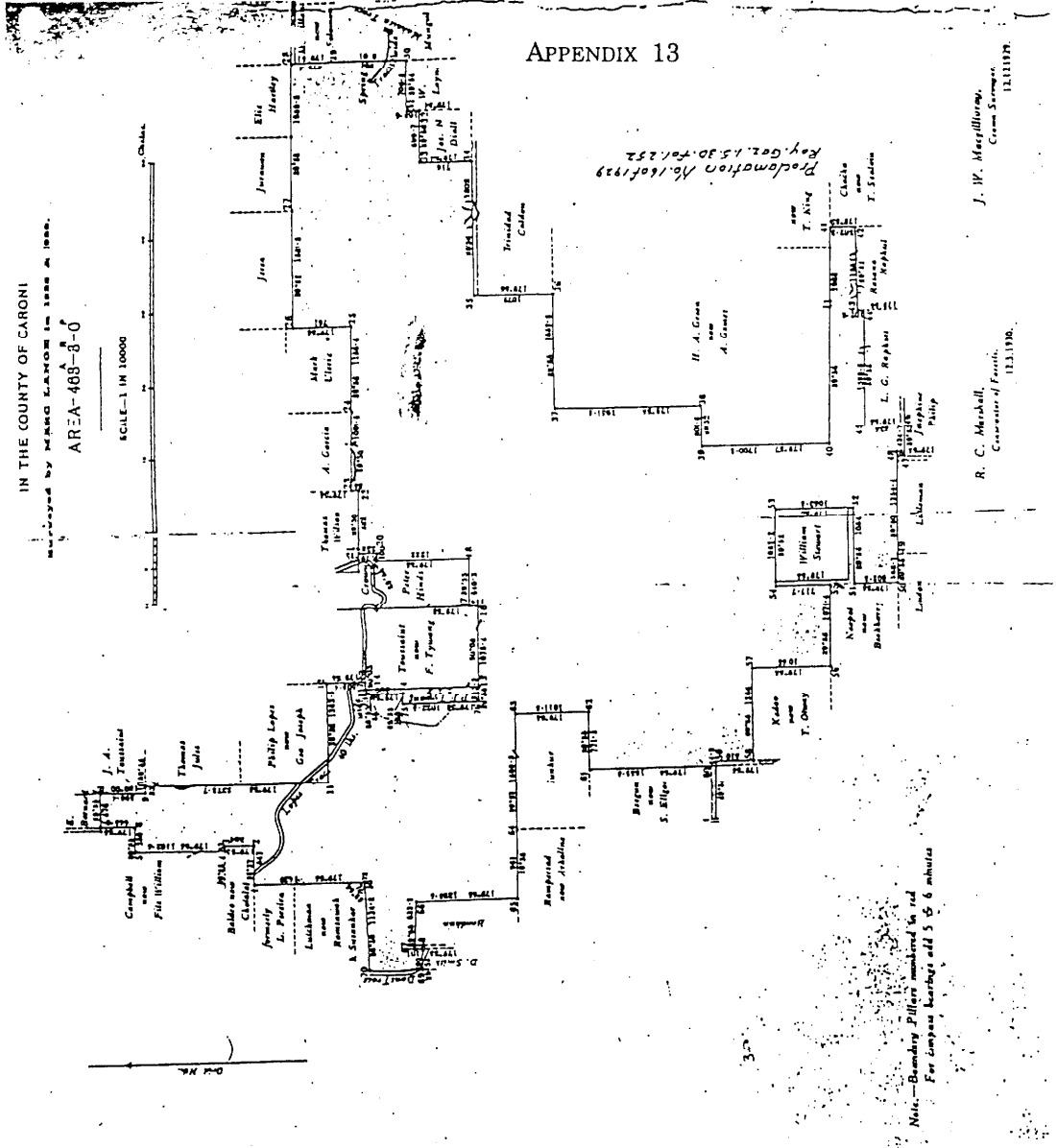
Surveyed by
Director of Survey

Hon Roy. Gaz. 17.3.1959
No. 12/59

0 0
EJ



STATION	BEARING	DISTANCE
1	113° 07'	141.0
2	170° 15'	204.5
3	140° 15'	153.7
4	131° 15'	143.0
5	121° 15'	143.0
6	111° 15'	143.0
7	101° 15'	143.0
8	91° 15'	143.0
9	81° 15'	143.0
10	71° 15'	143.0
11	61° 15'	143.0
12	51° 15'	143.0
13	41° 15'	143.0
14	31° 15'	143.0
15	21° 15'	143.0
16	11° 15'	143.0
17	1° 15'	143.0
18	359° 15'	143.0
19	349° 15'	143.0
20	339° 15'	143.0
21	329° 15'	143.0
22	319° 15'	143.0
23	309° 15'	143.0
24	299° 15'	143.0
25	289° 15'	143.0
26	279° 15'	143.0
27	269° 15'	143.0
28	259° 15'	143.0
29	249° 15'	143.0
30	239° 15'	143.0
31	229° 15'	143.0
32	219° 15'	143.0
33	209° 15'	143.0
34	199° 15'	143.0
35	189° 15'	143.0



APPENDIX 14

35

TODD'S ROAD SOUTH FOREST RESERVE.

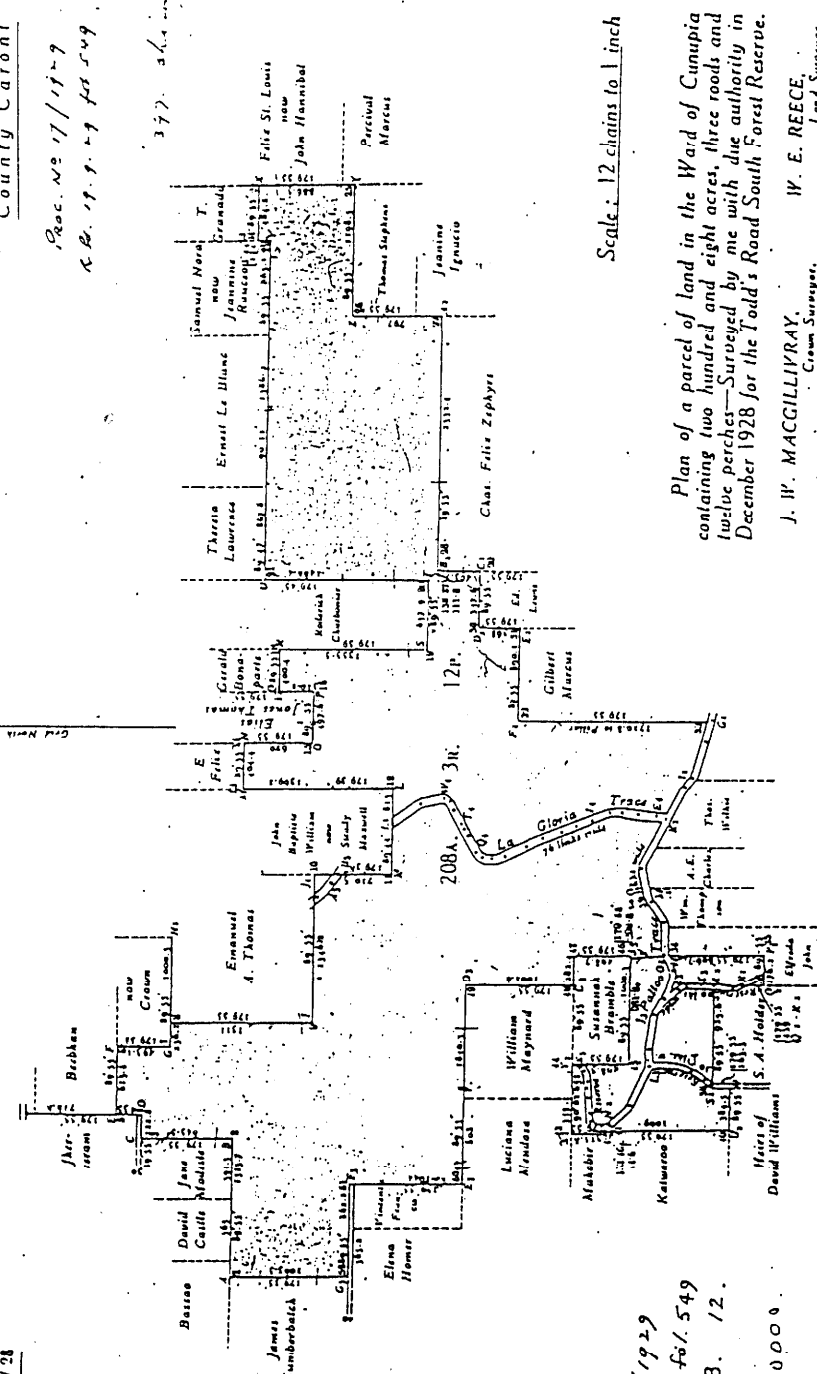
Ward of Cunupia
County Caroni

Proc. No 17/1929
R.O. 19.9.29 fol. 549

377. 3/4

"U"

Survey Order 440/28
S.D. 40/28



Scale: 12 chains to 1 inch

Plan of a parcel of land in the Ward of Cunupia containing two hundred and eight acres, three roads and twelve perches—Surveyed by me with due authority in December 1928 for the Todd's Road South Forest Reserve.

J. W. MACGILLIVRAY, Crown Surveyor, 5.4.29.
W. E. REECE, Land Surveyor, 14.12.28.

R. C. MARSHALL, Commissioner of Forests, 11.4.29.

To obtain compass bearings and distances for minutes

Note. Red numbers denote concrete monuments. Black letters indicate traverse stations.

Proc. No 17/1929
R.O. 19.9.29 fol. 549
208. 3. 12.
S.D. 40/28

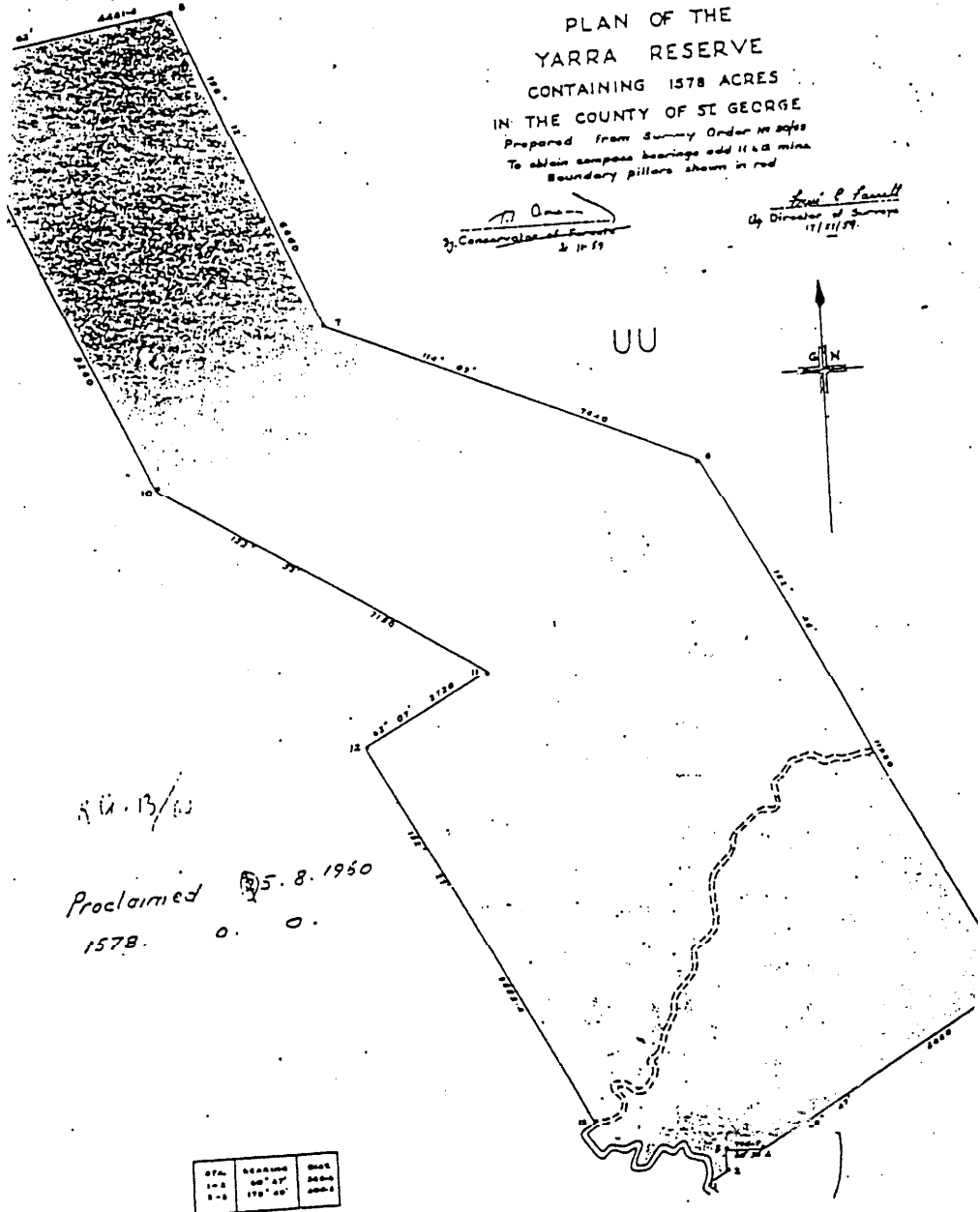
40

APPENDIX 15

PLAN OF THE
 YARRA RESERVE
 CONTAINING 1578 ACRES
 IN THE COUNTY OF ST GEORGE
 Prepared from Survey Order No 2045
 To obtain compass bearings add 11.25 mins
 Boundary pillars shown in red

T. J. O'Connell
 Conservator of Forests
 10/10/59

Frank P. Smith
 Director of Surveys
 17/11/59



5/12.13/62
 Proclaimed 5.8.1960
 1578. 0. 0.

STA.	BEARING	DIST.
1-2	00° 07'	2000
2-3	175° 00'	2000